

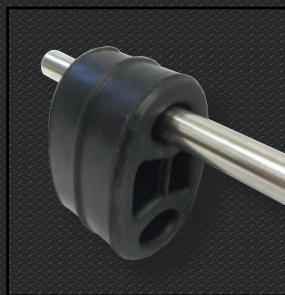
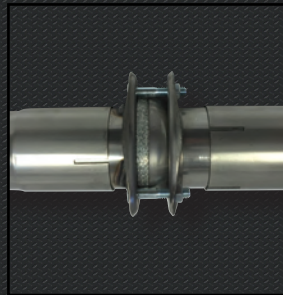
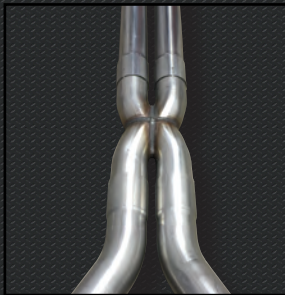
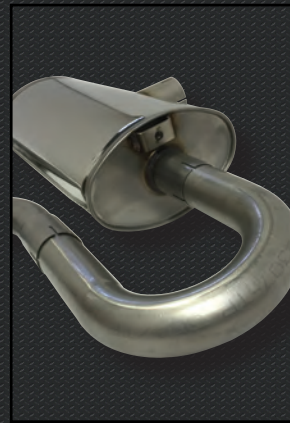


EXHAUSTS | AIR FILTERS | SPORTS CATALYSTS  
SINCE 1986

## Custom Build Exhaust Parts and High Flow Catalysts



Bends | Silencers | Straight Lengths | Stepped Adaptors  
X-Pipes | Y-Pipes | T-Pipes | Polylock Hosing | Interlock Hosing  
Sports Catalysts | Flanges | Compensators | Lambda Fittings  
Clamps | Hangers/Rubbers | dB Reducers



1.75" to 5" Exhaust Parts, for ROAD, RACE or RALLY use.  
Available in mild, aluminised and stainless steel.

### Catalogue 30



## Why Choose Jetex?



Jetex have been supplying the aftermarket since the mid-1980s (1986 to be precise) and today are one of the UK's leading supplier of Performance Exhaust Systems, Custom Exhaust Parts, Sports Catalytic Converters and Performance Air Filters.

Based in Stratford-upon-Avon, Warwickshire, Jetex stock a huge range of performance parts that are supplied throughout the United Kingdom, Europe, the USA and Asia.

Over 30 years, we have stayed true to our philosophy of only offering customers well engineered products that fit and perform well - the main reason why we have a loyal customer base but also why we attract new customers every year!



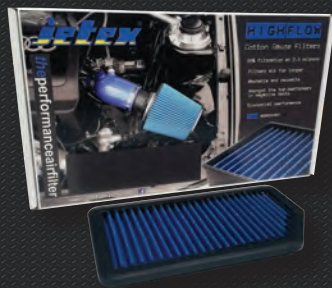
## Performance Exhaust Systems



## Hi-Flow Performance Filters



- Drop in panel, round and cone filters for the standard airbox
- Cone and cylindrical filters
- Induction kits
- Cleaning kits



- Nearly 400 unique exhaust systems
- Over 5,500 filter applications
- Over 300 custom exhaust components
- Over 35 unique custom catalytic converters
- Over 9,500 direct fit catalytic converters



Jetex are one of the U.K's leading supplier of custom exhaust parts for road, race or rally use.

Parts are available with diameters from 1.75" (45mm) to 5" (127mm) in either stainless or mild steel (some parts are made from aluminised steel). Unique silencer fabrication allows 2" boxes to withstand temperatures of up to 600 degrees centigrade (for normal road conditions), while our 2.5", 3" and 3.5" boxes can withstand temperatures of up to 800 degrees centigrade (for higher powered engines and when used for race and rally applications).

Jetex offer a wide range of pipework, bends, silencer boxes, adaptors and tailpipes to construct an almost endless variety of free-flowing, power enhancing custom exhausts to suit your own unique application. Together with our range of Sports Catalysts, Jetex offer the total solution for road or race conditions.

## Contents

<b>Pipework - Straight</b>	<b>3</b>
<b>Hosing - Polylock</b>	<b>3</b>
<b>Bends - Mandrel</b>	<b>3, 4</b>
<b>Bends - Tight 90°</b>	<b>4</b>
<b>Flexi-Joints - Braided ILOK</b>	<b>4</b>
<b>Bends - Over-Axle</b>	<b>5</b>
<b>Sleeves - Double Ended</b>	<b>5</b>
<b>Adaptors - Stepped</b>	<b>5</b>
<b>T Pieces</b>	<b>6</b>
<b>Y Pieces</b>	<b>6</b>
<b>X Pieces</b>	<b>6</b>
<b>Compensators</b>	<b>7</b>
<b>Flange Assemblies</b>	<b>7</b>
<b>Flange Kits</b>	<b>7</b>
<b>Silencers - Round</b>	<b>8</b>
<b>Silencers - Round (with tailpipe)</b>	<b>8</b>
<b>Silencers - Oval</b>	<b>9</b>
<b>Silencers - Oval (with tailpipe)</b>	<b>9, 10</b>
<b>Silencers - Split 1 into 2</b>	<b>10</b>
<b>Silencers - Split 2 into 2</b>	<b>10</b>
<b>Silencers - Transverse 1 into 2</b>	<b>11</b>
<b>Decibel Reducers</b>	<b>11</b>
<b>Tailpipes</b>	<b>11, 12</b>
<b>Spacers</b>	<b>13</b>
<b>Fittings</b>	<b>13</b>
<b>Clamps</b>	<b>14</b>
<b>Lamda Fittings</b>	<b>14</b>
<b>100 CPSI Catalysts (inc. FIA)</b>	<b>15</b>
<b>200 CPSI Catalysts (inc. EU)</b>	<b>16, 17</b>
<b>100 &amp; 200 CPSI Mantle Cores</b>	<b>17</b>
<b>Cones</b>	<b>17</b>
<b>Sleeves</b>	<b>18</b>
<b>Complete Catalysts (universal fit with cores, cones and sleeves)</b>	<b>18</b>

Please note that Jetex make every effort to supply parts as described in this catalogue. However, parts are subject to change and therefore it is advisable to confirm dimensions and/or description at time of order.

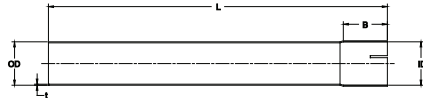
Jetex custom exhaust parts are not designed for a particular vehicle model. The range is intended for customers to fabricate their own or adapt/modify an existing exhaust.

Jetex will offer advice in good faith but ultimately Jetex cannot accept liability for any losses that may occur due to the fitting of non-specific exhaust parts.



## STRAIGHT LENGTHS 1/2M & 1M

Each straight length of pipe has a flare one end.



Dia.	Part Number	Material	Description	OD	ID	L	B	t
1.75"	U014500 (m) U014500R (ss)	Mild or Stainless	1m Length	44.5	44.8	990	65	1.5
1.75"	U014550 (m) U014550R (ss)	Mild or Stainless	1/2m Length	44.5	44.8	490	65	1.5
2.0"	U015100 (m) U015100R (ss)	Mild or Stainless	1m Length	50.8	51.1	990	65	1.5
2.0"	U015150 (m) U015150R (ss)	Mild or Stainless	1/2m Length	50.8	51.1	490	65	1.5
2.5"	U016300 (m) U016300R (ss)	Mild or Stainless	1m Length	63.5	63.8	990	65	1.5
2.5"	U016350 (m) U016350R (ss)	Mild or Stainless	1/2m Length	63.5	63.8	490	65	1.5
3.0"	U017600 (m) U017600R (ss)	Mild or Stainless	1m Length	76.1	76.4	990	75	1.5
3.0"	U017650 (m) U017650R (ss)	Mild or Stainless	1/2m Length	76.1	76.4	490	75	1.5
3.5"	U018900 (m) U018900R (ss)	Mild or Stainless	1m Length	88.9	89.3	990	75	1.5
3.5"	U018950 (m) U018950R (ss)	Mild or Stainless	1/2m Length	88.9	89.3	490	75	1.5
4.0"	U010200 (m) U010200R (ss)	Mild or Stainless	1m Length	101.6	101.9	990	90	1.5
5.0"	U012700 (m) U012700 (ss)	Mild or Stainless	1m Length	127.0	127.4	990	110	2.0
			Tolerance	-/-0.1	-/-0.2	-/5	-/5	-/0.1



## POLYLOCK HOISING 1/2M

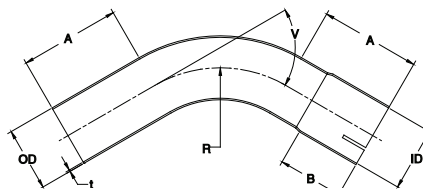
Can be clamped (by slotting the pipe) or welded into place.

Dia.	Part Number	Material	Description	ID	L	t
1.75"	U054550 (g) U054550R (ss)	Galvanised or Stainless	1/2m Length	44.8	500	1.5
2.0"	U055150 (g) U055150R (ss)	Galvanised or Stainless	1/2m Length	51.1	500	1.5
2.5"	U056350 (g) U056350R (ss)	Galvanised or Stainless	1/2m Length	63.8	500	1.5
3.0"	U057650 (g) U057650R (ss)	Galvanised or Stainless	1/2m Length	76.4	500	1.5
3.5"	U058950 (g) U058950R (ss)	Galvanised or Stainless	1/2m Length	89.3	500	1.5



## MANDREL BENDS 30°, 45°, 60°, 90° & 180°

Each bend has a sleeve one end (except 180 degree).



30 Degree Bend



45 Degree Bend



Dia.	Part Number	Material	Description	OD	ID	A	B	R	V	t
1.75"	U024530 (m) U024530R (ss)	Mild or Stainless	30° with sleeve	44.5	44.8	100	65	100	30	1.5
1.75"	U024545 (m) U024545R (ss)	Mild or Stainless	45° with sleeve	44.5	44.8	100	65	100	45	1.5
1.75"	U024560 (m) U024560R (ss)	Mild or Stainless	60° with sleeve	44.5	44.8	100	65	100	60	1.5
1.75"	U024590 (m) U024590R (ss)	Mild or Stainless	90° with sleeve	44.5	44.8	100	65	100	90	1.5
1.75"	U024518 (m) U024518R (ss)	Mild or Stainless	180° (no sleeve)	44.5	N/A	160	N/A	75	180	1.5
2.0"	U025130 (m) U025130R (ss)	Mild or Stainless	30° with sleeve	50.8	51.1	100	65	100	30	1.5
2.0"	U025145 (m) U025145R (ss)	Mild or Stainless	45° with sleeve	50.8	51.1	100	65	100	45	1.5
2.0"	U025160 (m) U025160R (ss)	Mild or Stainless	60° with sleeve	50.8	51.1	100	65	100	60	1.5
2.0"	U025190 (m) U025190R (ss)	Mild or Stainless	90° with sleeve	50.8	51.1	100	65	100	90	1.5
2.0"	U025118 (m) U025118R (ss)	Mild or Stainless	180° (no sleeve)	50.8	N/A	160	N/A	85	180	1.5
2.5"	U026330 (m) U026330R (ss)	Mild or Stainless	30° with sleeve	63.5	63.8	100	65	130	30	1.5
2.5"	U026345 (m) U026345R (ss)	Mild or Stainless	45° with sleeve	63.5	63.8	100	65	130	45	1.5
2.5"	U026360 (m) U026360R (ss)	Mild or Stainless	60° with sleeve	63.5	63.8	100	65	130	60	1.5
2.5"	U026390 (m) U026390R (ss)	Mild or Stainless	90° with sleeve	63.5	63.8	100	65	130	90	1.5
2.5"	U026318 (m) U026318R (ss)	Mild or Stainless	180° (no sleeve)	63.5	N/A	160	N/A	100	180	1.5

60 Degree Bend



90 Degree Bend

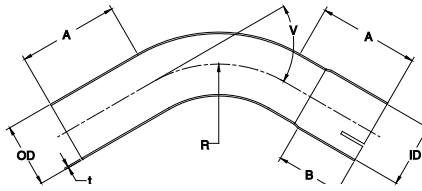


180 Degree Bend



...continued on next page (3" to 5" bends)

## MANDREL BENDS 30°, 45°, 60°, 90° & 180°



30 Degree Bend



45 Degree Bend



60 Degree Bend



90 Degree Bend



180 Degree Bend

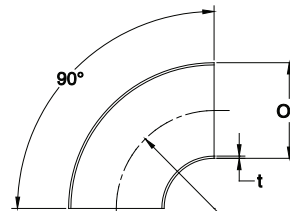


Dia.	Part Number	Material	Description	OD	ID	A	B	R	V	t
3.0"	U027630 (m) U027630R (ss)	Mild or Stainless	30° with sleeve	76.1	76.4	115	75	160	30	1.5
3.0"	U027645 (m) U027645R (ss)	Mild or Stainless	45° with sleeve	76.1	76.4	115	75	160	45	1.5
3.0"	U027660 (m) U027660R (ss)	Mild or Stainless	60° with sleeve	76.1	76.4	115	75	160	60	1.5
3.0"	U027690 (m) U027690R (ss)	Mild or Stainless	90° with sleeve	76.1	76.4	115	75	160	90	1.5
3.0"	U027618 (m) U027618R (ss)	Mild or Stainless	180° (no sleeve)	76.1	N/A	160	N/A	120	180	1.5
3.5"	U028930 (m) U028930R (ss)	Mild or Stainless	30° with sleeve	88.9	89.3	165	75	160	30	1.5
3.5"	U028945 (m) U028945R (ss)	Mild or Stainless	45° with sleeve	88.9	89.3	165	75	160	45	1.5
3.5"	U028960 (m) U028960R (ss)	Mild or Stainless	60° with sleeve	88.9	89.3	165	75	160	60	1.5
3.5"	U028990 (m) U028990R (ss)	Mild or Stainless	90° with sleeve	88.9	89.3	165	75	160	90	1.5
4.0"	U020230 (m) U020230R (ss)	Mild or Stainless	30° with sleeve	101.6	102.1	200	90	220	30	1.5
4.0"	U020245 (m) U020245R (ss)	Mild or Stainless	45° with sleeve	101.6	102.1	200	90	220	45	1.5
4.0"	U020260 (m) U020260R (ss)	Mild or Stainless	60° with sleeve	101.6	102.1	200	90	220	60	1.5
4.0"	U020290 (m) U020290R (ss)	Mild or Stainless	90° with sleeve	101.6	102.1	200	90	220	90	1.5
5.0"	U022730 (m) U022730R (ss)	Mild or Stainless	30° with sleeve	127.0	127.5	250	110	285	30	2.0
5.0"	U022745 (m) U022745R (ss)	Mild or Stainless	45° with sleeve	127.0	127.5	250	110	285	45	2.0
5.0"	U022760 (m) U022760R (ss)	Mild or Stainless	60° with sleeve	127.0	127.5	250	110	285	60	2.0
5.0"	U022790 (m) U022790R (ss)	Mild or Stainless	90° with sleeve	127.0	127.5	250	110	285	90	2.0
			Tolerance	-/-0.1	-/-0.2	-/-5	-/-5	-/-2	-/-2	-/-0.1

## TIGHT 90° BENDS

Tight bends are made by welding two pressed halves together.

Dia.	Part Number	Material	Description	OD	R	t
1.75"	U034590 (m) U034590R (ss)	Mild or Stainless	Tight Bend 90°	44.5	48	1.5
2.0"	U035190 (m) U035190R (ss)	Mild or Stainless	Tight Bend 90°	50.8	52	1.5
2.5"	U036390 (m) U036390R (ss)	Mild or Stainless	Tight Bend 90°	63.5	63	1.5
3.0"	U037690 (m) U037690R (ss)	Mild or Stainless	Tight Bend 90°	76.1	62	1.5
3.5"	U038990 (m) U038990R (ss)	Mild or Stainless	Tight Bend 90°	88.9	76	1.5
4.0"	U030290 (m) U032090R (ss)	Mild or Stainless	Tight Bend 90°	101.6	75	1.5
5.0"	U032790 (m) U032790R (ss)	Mild or Stainless	Tight Bend 90°	127.0	100	1.5



## INTERLOCK LINED FLEXI-JOINTS

Flex to be welded to original pipework.

Dia.	Part Number	Material	Description	ID	L*
1.75"	UFILOK45MM	Stainless	Lined Exhaust Flex	44.5	150
2.0"	UFILOK515MM	Stainless	Lined Exhaust Flex	50.8	150
2.5"	UFILOK635MM	Stainless	Lined Exhaust Flex	63.5	150
2.75"	UFILOK71MM	Stainless	Lined Exhaust Flex	71.0	150
3.0"	UFILOK765MM	Stainless	Lined Exhaust Flex	76.5	150
3.0"	UFILOK765BMM	Stainless	Lined Exhaust Flex	76.5	100
3.5"	UFILOK89MM	Stainless	Lined Exhaust Flex	89.0	100

Twin ply bellows with an external braid - prevents exhaust twisting.  
\* Length includes collars.

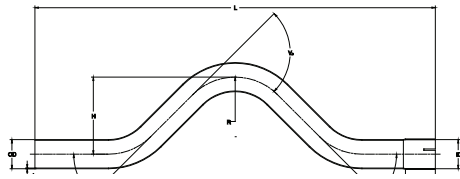
100mm long



150mm long

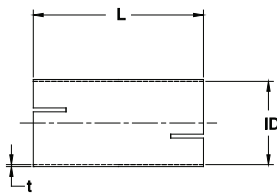


## OVER-AXLE BENDS



Dia.	Part Number	Material	Description	OD	ID	L	H	B	R	V1	V2	t
1.75"	U044500 (m) U044500R (ss)	Mild or Stainless	Over-axle with sleeve	44.5	44.8	650	190	65	100	60	120	1.5
2.0"	U045117 (m) U045100R (ss)	Mild or Stainless	Over-axle with sleeve	50.8	51.1	660	185	65	100	60	120	1.5
2.5"	U046321 (m) U046300R (ss)	Mild or Stainless	Over-axle with sleeve	63.5	63.8	900	170	65	90	45	90	1.5
3.0"	U047600 (m) U047600R (ss)	Mild or Stainless	Over-axle with sleeve	76.1	76.4	900	180	75	90	45	90	1.5
			Tolerance	-/-0.1	-/-0.2	-/-10	-/-5	-/-5	-/-2	-/-2	-/-2	-/-0.1

## DOUBLE-END SLEEVES



Sleeves are designed to join two pipes together.

Dia.	Part Number	Material	Type	Description	ID	L	t
1.75"	U064500 (as) U064500R (ss)	Aluminised or Stainless	A   A	Double ended sleeve	44.8	100	1.5
2.0"	U065120 (as) U065100R (ss)	Aluminised or Stainless	A   A	Double ended sleeve	51.1	100	1.5
2.5"	U066320 (as) U066300R (ss)	Aluminised or Stainless	B   B	Double ended sleeve	63.8	150	1.5
3.0"	U067620 (as) U067620R (ss)	Aluminised or Stainless	A   A	Double ended sleeve	76.4	190	1.5
3.5"	U068900 (as) U068900R (ss)	Aluminised or Stainless	B   B	Double ended sleeve	89.3	190	1.5
4.0"	U060200 (m) U060200R (ss)	Mild or Stainless	B   B	Double ended sleeve	102.1	220	1.5
5.0"	U062700 (m) U062700R (ss)	Mild or Stainless	B   B	Double ended sleeve	127.5	260	2.0
				Tolerance	-/-0.2	-/-2	-/-0.1

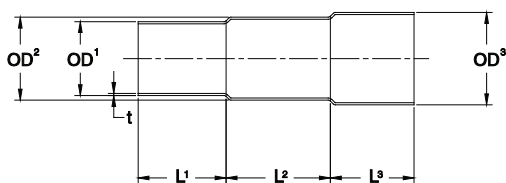
Type (A)



Type (B)



## STEPPED ADAPTORS



2 Step Sleeve



U066315



U066315 has one end with an outside diameter of 63.5mm/2.5", with the other end slotted to fit OVER 63.5mm/2.5" pipework.

Dia.	Part Number	Material	Description	OD1	OD2	OD3	L1	L2	L3
1.75"	U074500 (as) U074500R (ss)	Aluminised or Stainless	2 step sleeve	38	42	44.5	50	50	60
2.0"	U075115 (as) U075100R (ss)	Aluminised or Stainless	2 step sleeve	41	48	50.8	40	55	65
2.5"	U076320 (as) U076300R (ss)	Aluminised or Stainless	2 step sleeve	50.8	57	63.5	60	75	55
2.5"	U066315 (as)	Aluminised	1 step sleeve (with slots)	*see notes			150mm in total		
2.5"	AA635483 (ss)	Stainless	1 step sleeve (with slots)	*see notes			105mm in total		
2.5"	AA635511 (ss)	Stainless	1 step sleeve (with slots)	*see notes			105mm in total		
2.5"	AA635553 (ss)	Stainless	1 step sleeve (with slots)	*see notes			105mm in total		
3.0"	U077600 (as) U077600R (ss)	Aluminised or Stainless	2 step sleeve	63.5	67	76.1	65	65	65
3.0"	AA761638 (ss)	Stainless	1 step sleeve (with slots)	*see notes			115mm in total		
3.5"	U078900 (as) U078900R (ss)	Aluminised or Stainless	2 step sleeve	76.1	80	88.9	65	65	65
4.0"	U070200 (m) U070200R (ss)	Mild or Stainless	1 step sleeve*	88.9	N/A	101.6	220mm in total		
5.0"	U072700 (m) U072700R (ss)	Mild or Stainless	1 step sleeve*	101.6	N/A	127.0	220mm in total		
			Tolerance	-/-0.2	-/-0.2	-/-0.2	-/-5	-/-5	-/-5

AA Adaptors

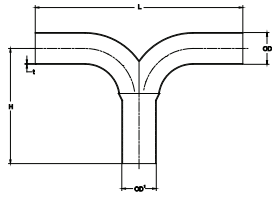


AA635483, AA635511 and AA635553 all have one end with an outside diameter of 63.5mm/2.5", with the other end slotted to fit OVER 48mm, 51mm or 55mm pipework.

AA761638 has one end with an outside diameter of 76.1mm/3.0", with the other end slotted to fit OVER 63.5mm pipework.

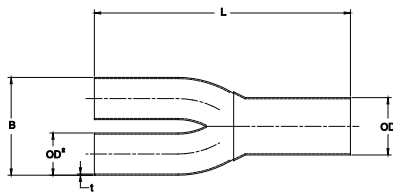
\*4" and 5" stepped adaptors only have 1 step and are formed using two halves welded together

## T PIECES



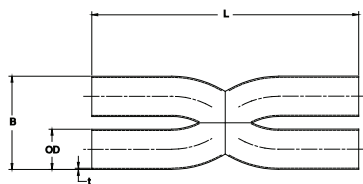
Dia.	Part Number	Material	Description	H	L	OD1	OD2	t
2.5"	U916351 (as) U916351R (ss)	Aluminised or Stainless	T branch pipe	180	350	63.5	50.8	1.5
2.5"	U916363 (as) U916363R (ss)	Aluminised or Stainless	T branch pipe	190	370	63.5	63.5	1.5
3.0"	U917663 (as) U917663R (ss)	Aluminised or Stainless	T branch pipe	170	360	76.1	63.5	1.5
3.0"	U917676 (as) U0917676R (ss)	Aluminised or Stainless	T branch pipe	250	420	76.1	76.1	1.5
3.5"	U918976 (as) U918976R (ss)	Aluminised or Stainless	T branch pipe	250	420	88.9	76.1	1.5
			Tolerance	-/-20	-/-10	-/-0.2	-/-0.2	-/-0.1

## Y PIECES



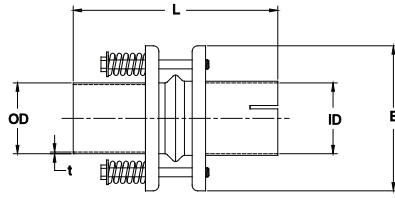
Dia.	Part Number	Material	Description	B	L	OD1	OD2	t
2.0"	U905142 (as)	Aluminised	Y branch pipe	95	320	50.8	42.0	1.5
2.0"	U905145 (as) U905145R (ss)	Aluminised or Stainless	Y branch pipe	100	320	50.8	44.5	1.5
2.0"	U905151 (as) U905151R (ss)	Aluminised or Stainless	Y branch pipe	115	325	50.8	50.8	1.5
2.25"	U905745 (as)	Aluminised	Y branch pipe	100	320	57.0	44.5	1.5
2.25"	U905748 (as)	Aluminised	Y branch pipe	110	320	57.0	48.0	1.5
2.5"	U906348 (as)	Aluminised	Y branch pipe	110	320	63.5	48.0	1.5
2.5"	U906351 (as) U906351R (ss)	Aluminised or Stainless	Y branch pipe	115	315	63.5	50.8	1.5
2.5"	U906363 (as) U906363R (ss)	Aluminised or Stainless	Y branch pipe	140	320	63.5	63.5	1.5
3.0"	U907663 (as) U907663R (ss)	Aluminised or Stainless	Y branch pipe	140	325	76.1	63.5	1.5
3.0"	U907676 (as) U907676R (ss)	Aluminised or Stainless	Y branch pipe	165	380	76.1	76.1	1.5
3.5"	U908976 (as) U908976R (ss)	Aluminised or Stainless	Y branch pipe	170	380	88.9	76.1	1.5
			Tolerance	-/-5	-/-10	-/-0.2	-/-0.2	-/-0.1

## X PIECES - T304 STAINLESS ONLY



Dia.	Part Number	Material	Description	B	L	OD	t
2.0"	U9051XR (ss)	Stainless	X pipe - ideal for V6/V8 engines	120	375	50.8	1.5
2.5"	U9063XR (ss)	Stainless	X pipe - ideal for V6/V8 engines	140	380	63.5	1.5
3.0"	U9076XR (ss)	Stainless	X pipe - ideal for V6/V8 engines	165	480	76.1	1.5

## COMPENSATORS



Dia.	Part Number	Material	Description	OD	ID	L	B	t
2.0"	U055100 (m)	Mild	Compensator - prevents fracture between downpipe and exhaust.	50.8	51.1	200	135	1.5
2.5"	U056300 (m)	Mild	Compensator - prevents fracture between downpipe and exhaust.	63.5	63.8	185	135	1.5
3.0"	U057600 (ss)	Stainless	Compensator - prevents fracture between downpipe and exhaust.	76.1	76.4	185	145	1.5
			Tolerance	-/-0.1	-/-0.2	-/-5	-/-5	-/-0.1

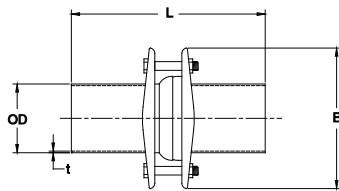
U055100 | U056300



U057600



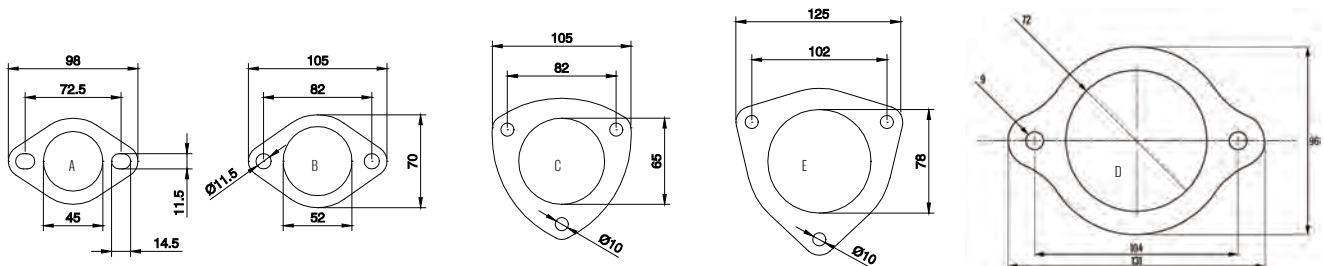
## FLANGE ASSEMBLIES - STAINLESS STEEL



Dia.	Part Number	Material	Description	OD	L	B	t
2.5"	U036301R (ss)	Stainless	Two pipes joined with a three bolt hole flange separated by a fabric packing ring.	63.5	190	110	1.5
2.5"	U037601R (ss)	Stainless	Two pipes joined with a three bolt hole flange separated by a fabric packing ring.	76.1	190	130	1.5
			Tolerance	-/-0.2	-/-5	-/-5	-/-0.1



## FLANGE KITS - MILD STEEL WITH GASKET



Dia.	Part Number	Material	Description	Image
1.75"	U034500 (m)	Mild	2 x 2-bolt flanges with gasket	A
2.0"	U035100 (m)	Mild	2 x 2-bolt flanges with gasket	B
2.5"	U036300 (m)	Mild	2 x 3-bolt flanges with gasket	C
2.75"	U037200 (m)	Mild	2 x 2-bolt flanges with gasket	D
3.0"	U037600 (m)	Mild	2 x 3-bolt flanges with gasket	E

U034500



U035100



U037200

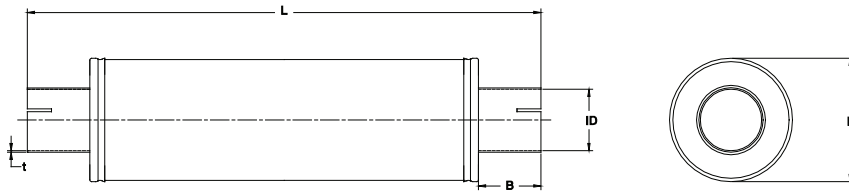


U036300 | U037600





## ROUND SILENCERS



Dia.	Part Number	Material	Description	ID	L	B	D	t
1.75"	U404500 (as) U404500R (ss)	Aluminised or Stainless	Micro 45	44.8	530	65	80	1.5
1.75"	U414500 (as) U414500R (ss)	Aluminised or Stainless	Midi 45	44.8	550	65	100	1.5
2.0"	U405120 (as) U405100R (ss)	Aluminised or Stainless	Micro 51	51.1	530	65	80	1.5
2.0"	U415129 (as) U415100R (ss)	Aluminised or Stainless	Midi 51	51.1	550	65	100	1.5
2.5"	U456300 (as) U456300R (ss)	Aluminised or Stainless	Handy 63	63.8	380	65	125	1.5
2.5"	U436337 (as) U436300R (ss)	Aluminised or Stainless	Slim 63	63.8	550	65	125	1.5
2.5"	U446300 (as) U446300R (ss)	Aluminised or Stainless	TubeX 63	63.8	755	65	100	1.5
3.0"	U457600 (as) U457600R (ss)	Aluminised or Stainless	Turbonett 76	76.4	380	65	125	1.5
3.0"	U447600 (as) U447600R (ss)	Aluminised or Stainless	Turbex 76	76.4	755	65	125	1.5
3.5"	U458900 (as) U458900R (ss)	Aluminised or Stainless	Grandonett 89	89.3	400	75	140	1.5
4.0"	U440200 (as) U440200R (ss)	Aluminised or Stainless	Turbex XL 102	102.1	830	100	200	
4.0"	U430200 (as) U430200R (ss)	Aluminised or Stainless	Grandonett XL 102	102.1	480	100	300	
5.0"	U442700 (as) U442700R (ss)	Aluminised or Stainless	Turbex XXL 127	127.5	830	120	200	
5.0"	U432700 (as) U432700R (ss)	Aluminised or Stainless	Grandonett XXL 127	127.5	480	120	300	
			Tolerance	-/-0.2	-/-10	-/-5	-/-3	-/-0.1

U404500 | U405120



U404500R | U405100R



U414500 | U415129



U414500R | U415100R



U456300 | U457600 | U458900



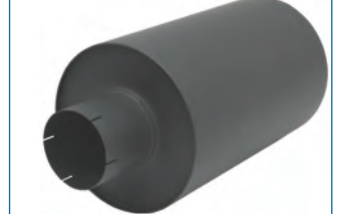
U436337 | U446300



U440200 | U442700



U430200 | U432700



U456300R | U457600R | U458900R



U436300R | U446300R



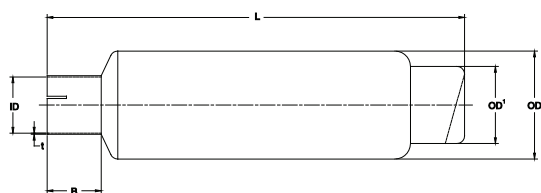
U440200R | U442700R



U430200R | U432700R



## ROUND SILENCERS WITH 4" & 4.5" TAILPIPE



U286302R | U287600R



U286302R | U287600R

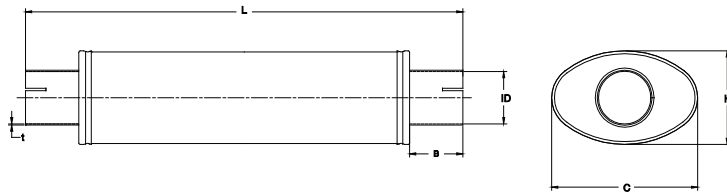


Dia.	Part Number	Material	Description	ID	B	L	OD1	OD2	t
2.5"	U286302R (ss)	Stainless	Sprint 63 XL	63.8	65	465	114/4.5"	140	1.5
3.0"	U287601R (ss)	Stainless	Sprint 76	76.4	65	465	100/4"	125	1.5
3.0"	U287602R (ss)	Stainless	Sprint 76 XL	76.4	65	465	114/4.5"	140	1.5
3.0"	U287603R (ss)	Stainless	Sprint 76 JAP	76.4	65	465	114/4.5"	140	1.5
			Each silencer with tailpipe is supplied with a hanging strap.						
			Tolerance	-/-0.2	-/-5	-/-10	-/-3	-/-3	-/-0.1

U287603R



## OVAL SILENCERS

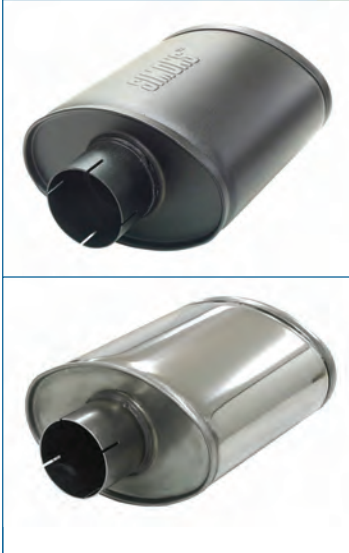


Dia.	Part Number	Material	Description	ID	L	B	H	C	t
1.75"	U334500 (as) U334500R (ss)	Aluminised or Stainless	Medium 45	44.8	550	65	100	165	1.5
2.0"	U355124 (as) U355100R (ss)	Aluminised or Stainless	Small 51	51.1	450	65	100	165	1.5
2.0"	U335139 (as) U335100R (ss)	Aluminised or Stainless	Medium 51	51.1	550	65	100	165	1.5
2.0"	U325100 (as) U325100R (ss)	Aluminised or Stainless	Big 51	51.1	550	65	115	185	1.5
2.5"	U316335 (as) U316300R (ss)	Aluminised or Stainless	Super 63	63.8	450	65	115	185	1.5
2.5"	U326340 (as) U326300R (ss)	Aluminised or Stainless	Big 63	63.8	550	65	115	185	1.5
2.5"	U336300 (as) U336300R (ss)	Aluminised or Stainless	Heavy 63	63.8	630	65	140	220	1.5
3.0"	U307600 (as) U307600R (ss)	Aluminised or Stainless	Turbotight 76	76.4	380	65	140	220	1.5
3.0"	U337600 (as) U337600R (ss)	Aluminised or Stainless	Turbolight 76	76.4	550	65	140	220	1.5
3.0"	U327600 (as) U327600R (ss)*	Aluminised or Stainless	Turbo 76	76.4	630	65	140	220	1.5
3.5"	U308900 (as) U308900R (ss)	Aluminised or Stainless	Grandotight 89	89.3	400	75	140	220	1.5
3.5"	U328900 (as) U328900R (ss)	Aluminised or Stainless	Grand 89	89.3	650	75	140	220	1.5
*U327600/R has one of the sleeves off centre by 50mm			Tolerance	-/-0.2	-/-10	-/-5	-/-3	-/-3	-/-0.1

### 100mm/4" x 165mm/6.5" Silencers



### 140mm/5.5" x 220mm/8.5" Silencers



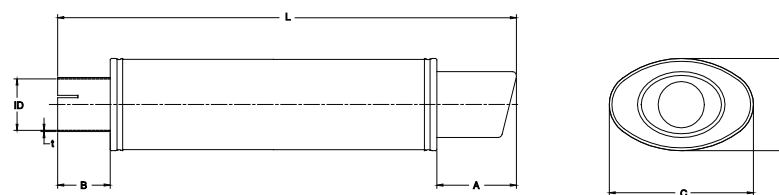
### 140mm/5.5" x 220mm/8.5" Offset Silencer



### 115mm/4.5" x 185mm/7" Silencers



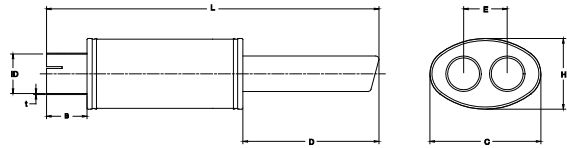
## OVAL SILENCERS WITH OVAL TAILPIPE (STAINLESS ONLY)



Dia.	Part Number	Material	Description	ID	B	L	A	H	C	t
2.5"	U226301R (ss)	Stainless	Ellips 63	63.8	65	670	180	140	165	1.5
3.0"	U227601R (ss)	Stainless	Ellips 76	76.4	65	670	180	140	165	1.5
Each silencer with tailpipe is supplied with a fixing point.			Tolerance	-/-0.2	-/-5	-/-10	-/-2	-/-3	-/-3	-/-0.1



### OVAL SILENCER WITH TWIN TAILPIPES (STAINLESS ONLY)

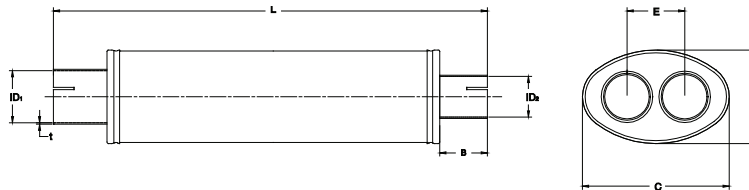


Dia.	Part Number	Material	Description	ID	B	L	H	C	D	E	t
2.0"	U225100R (ss)	Stainless	Maxi 51	51.1	65	540	100	165	220	70	1.5

Silencer with tailpipes is supplied with a fixing point.



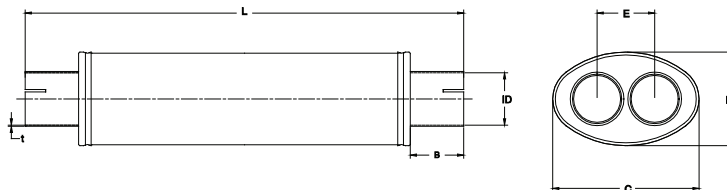
### SPLIT SILENCERS (1 INTO 2)



Dia.	Part Number	Material	Description	ID1	ID2	L	B	H	C	E	t
2.5"	U346351 (as) U346351R (ss)	Aluminised or Stainless	Split 63	63.8	51.1	450	65	115	185	80	1.5
3.0"	U347663 (as) U347663R (ss)	Aluminised or Stainless	Split 76	76.4	63.8	450	65	140	220	100	1.5



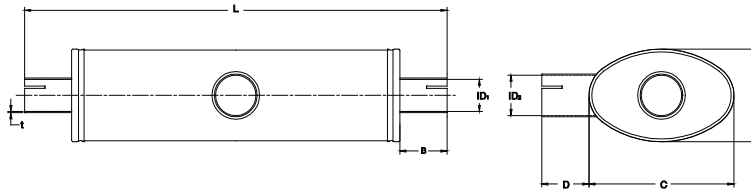
### SPLIT SILENCERS (2 INTO 2) (STAINLESS ONLY)



Dia.	Part Number	Material	Description	ID1	L	B	H	C	E	t
2.0"	U3451DR (ss)	Stainless	Duo 51	51.1	450	65	115	185	75	1.5
2.5"	U3463DR (ss)	Stainless	Duo 63	63.8	450	65	115	185	80	1.5
3.0"	U3476DR (ss)	Stainless	Duo 76	76.4	450	65	140	220	95	1.5



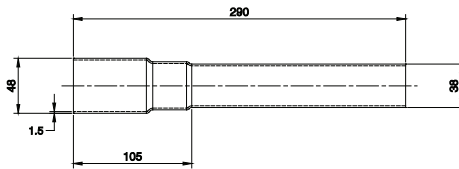
## DUPLEX (TRANSVERSE) SILENCERS (1 INTO 2) (STAINLESS ONLY)



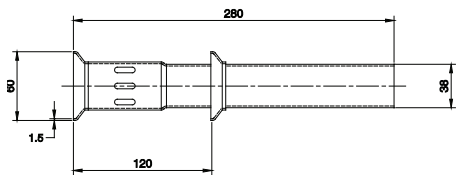
Dia.	Part Number	Material	Description	ID1	ID2	L	B	H	C	E	t
2.5"	U326351R (ss)	Stainless	Duplex 63-51	51.1	63.8	630	65	140	220	65	1.5
3.0"	U327663R (ss)	Stainless	Duplex 76-63	63.8	76.4	630	65	140	220	65	1.5

## DECIBEL REDUCERS - 2", 2.5" & 3"

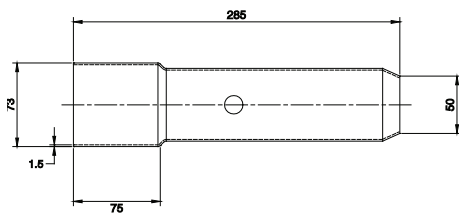
300mm of straight pipe required. Aluminised steel.



U935130



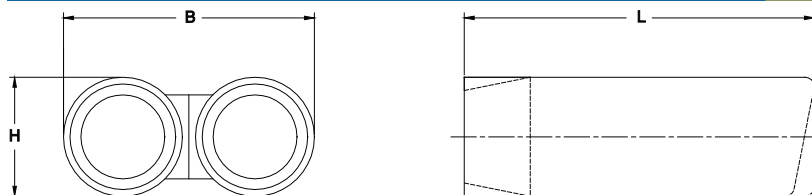
U936330



U937630



## TAILTRIMS (STAINLESS STEEL) - WELD TYPE



Dia.	Part Number	Material	Description	Style	Tip Edge	L	H	B
2.5"	U176300 (ss)	Stainless	Twin Rondo 63	Round	Straight	240	80/3"	170
2.5"	U186300 (ss)	Stainless	Twin Quattro 63	Square (rounded)	Straight	240	70/2.75"	190
N/A	U166300 (ss)	Stainless	Single Flat	Rectangle (letterbox)	Angled	300	70/2.75"	140/5.5"
N/A	U166301 (ss)	Stainless	Single Bold	Rectangle (letterbox)	Angled	300	85/3.5"	150/6.0"
N/A	U166310 (ss)	Stainless	Single Rondo	Round	Angled	300	100/4"	100/4"
					Tolerance	+/-5	+/-2	+/-5

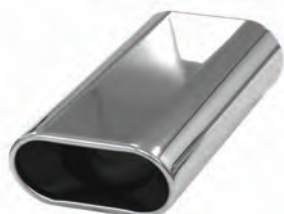
U176300



U186300



U166300



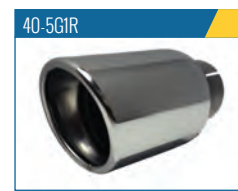
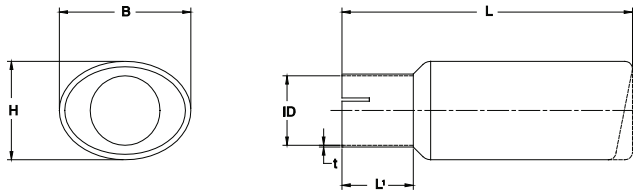
U166301



U166310



## TAILTRIMS (STAINLESS STEEL) - CLAMP TYPE



Dia.	Part Number	Material	Description	Style	Tip Edge	ID1	L	L1	H	B	t
1.75"	U254500 (ss)	Stainless	Rondo 45	Round	Angled	45.8	260	30	70/2.75"	70/2.75"	1.5
2.0"	U215118 (ss)	Stainless	Twin 51	Twin Round	Angled	51.1	360	65	58/2.25"	58/2.25"	1.5
2.0"	U235100 (ss)	Stainless	Ellips 51	Oval (rounded)	Angled	51.1	235	65	70/2.75"	90/3.5"	1.5
2.0"	U245100 (ss)	Stainless	Quattro 51	Square (rounded)	Straight	51.1	245	65	70/2.75"	90/3.5"	1.5
2.0"	U255100 (ss)	Stainless	Rondo 51	Round	Straight	51.1	275	65	70/2.75"	70/2.75"	1.5
2.0"	U255110 (ss)	Stainless	Rondo XL51	Round	Straight	51.1	265	65	100/4"	100/4"	1.5
2.0"	U265100 (ss)	Stainless	Bold 51	Rectangle (letterbox)	Angled	51.1	245	65	85/3.5"	150/6"	1.5
2.5"	U216300 (ss)	Stainless	Twin 63	Twin Round	Angled	63.8	360	65	58/2.25"	58/2.25"	1.5
2.5"	U236300 (ss)	Stainless	Ellips 63	Oval (rounded)	Angled	63.8	275	65	70/2.75"	90/3.5"	1.5
2.5"	U23630L (ss)	Stainless	Ellips 63 Left	Oval (rounded)	Angled	63.8	230	65	90/3.5"	120/4.5"	1.5
2.5"	U23630R (ss)	Stainless	Ellips 63 Right	Oval (rounded)	Angled	63.8	230	65	90/3.5"	120/4.5"	1.5
2.5"	U236310 (ss)	Stainless	Ellips XL63	Oval (rounded)	Angled	63.8	255	65	90/3.5"	120/4.5"	1.5
2.5"	U236320 (ss)	Stainless	Superior 63	Oval (rounded)	Angled	63.8	260	65	90/3.5"	140/5.5"	1.5
2.5"	U246300 (ss)	Stainless	Quattro 63	Square (rounded)	Straight	63.8	265	65	70/2.75"	90/3.5"	1.5
2.5"	U256300 (ss)	Stainless	Rondo 63	Round	Straight	63.8	275	65	80/3"	80/3"	1.5
2.5"	U256310 (ss)	Stainless	Rondo XL63	Round	Straight	63.8	265	65	100/4"	100/4"	1.5
2.5"	U256320 (ss)	Stainless	Rondo 63JAP	Round (slash)	Slash	63.8	300	65	100/4"	100/4"	1.5
2.5"	U266300 (ss)	Stainless	Bold 63	Rectangle (letterbox)	Angled	63.8	245	65	85/3.5"	150/6"	1.5
2.5"	40-5G1R (ss)	Stainless	Rondo 63TT	Round	Angled	63.8	175	65	100/4"	100/4"	1.5
3.0"	U237600 (ss)	Stainless	Ellips 76	Oval (rounded)	Angled	76.4	270	65	90/3.5"	120/4.5"	1.5
3.0"	U237620 (ss)	Stainless	Superior 76	Oval (rounded)	Angled	76.4	260	65	90/3.5"	140/5.5"	1.5
3.0"	U257600 (ss)	Stainless	Rondo 76	Round	Straight	76.4	245	65	100/4"	100/4"	1.5
3.0"	U257610 (ss)	Stainless	Rondo 76XL	Round	Straight	76.4	255	65	114/4.5"	114/4.5"	1.5
3.0"	U257620 (ss)	Stainless	Rondo 76JAP	Round (slash)	Angled	76.4	300	65	114/4.5"	114/4.5"	1.5
3.0"	U267600 (ss)	Stainless	Bold 76	Rectangle (letterbox)	Angled	76.4	245	65	85/3.5"	150/6"	1.5
3.5"	U258910 (ss)	Stainless	Rondo 89XL	Round	Straight	89.3	260	65	114/4.5"	114/4.5"	1.5
					Tolerance	+/-0.2	+/-0.5	+/-0.5	+/-0.2	+/-0.2	+/-0.1



## SPACERS - TO REDUCE PIPE DIAMETER

Ideal for pipe diameter reduction without extending pipe length. \* Material subject to change.

Dia.	Part Number	Material	Description	O/D	I/D
2.0"	UA51-45	Mild*	Spacer	51	45
2.0"	UA51-48	Aluminised*	Spacer	51	48
2.0"	UA51-50 (ss)	Stainless	Spacer	51	50
2.25"	UA57-51	Mild*	Spacer	57	51
2.25"	UA57-55	Aluminised*	Spacer	57	55
60mm	UA60-55	Aluminised*	Spacer	60	55
2.5"	UA63-57	Mild*	Spacer	63	57
2.5"	UA63-60	Aluminised*	Spacer	63	60
65mm	UA65-60	Aluminised*	Spacer	65	60



Other sizes are available, including: 55 to 50mm and 70 to 65mm.

## RUBBERS, BRACKETS, BOBBINS, STRAPS...

No.	Part Number	Description
1.	U826250	Rubber Mounting
2.	U826251	Rubber Mounting
3.	U826253	Rubber Mounting
4.	U826254	Rubber Mounting
5.	U826255	Rubber Mounting
6.	U826256	Rubber Mounting
7.	U826257	Rubber Mounting
8.	U807010	Rubber Ring
9.	U847025	Hanging Strap
10.	U812308	M8 Bobbin/Cushion
11.	U839045	Hanging Bracket
12.	U836025	Hanging Hook (ideal with rubber mounting U826250)
13.	U831103	Hanging Hook
13.	U831503	Hanging Bracket
14.	U724565	Universal Hanging Strap for pipes 45-65mm (1.75"-2.5")
15.	M112015/R	12mm Hanger Rod (1m length) (mild or stainless)

U826250



U826251



U826253



U826254



U826255



U826256



U826257



U807010



U847025



U812308



U839045



U836025



U831103



U831503



U724565



M112015/R



## U CLAMPS (GALVANISED)

Dia.	Part Number	Description
1.75"/48mm	U704810	U Clamp
2.0"/54mm	U705410	U Clamp
2.5"/67mm	U706710	U Clamp
3.0"/80mm	U708010	U Clamp
3.5"/89mm	U709210	U Clamp
4.0"/102mm	U70210	U Clamp



## FLAT/RING CLAMPS (GALVANISED)

Dia.	Part Number	Description
1.75"/48mm	U714810	Flat Clamp (single bolt)
2.0"/54mm	U715410	Flat Clamp (single bolt)
2.5"/67mm	U716710	Flat Clamp (single bolt)



## FLAT/RING CLAMPS (STAINLESS)

Dia.	Part Number	Description
1.75"/48mm	UBK048R	Flat Clamp (single bolt)
2.0"/54mm	UBK054R	Flat Clamp (single bolt)
2.25"/57mm	UBK057R	Flat Clamp (single bolt)
63mm	UBK063R	Flat Clamp (single bolt)
2.5"/67mm	UBK067R	Flat Clamp (single bolt)
2.75"/73mm	UBK073R	Flat Clamp (single bolt)
3.0"/79mm	UBK079R	Flat Clamp (single bolt)
3.5"/92mm	UBK092R	Flat Clamp (single bolt)
4.0"/105mm	UBK105R	Flat Clamp (single bolt)
5.0"/130mm	UBK130R	Flat Clamp (single bolt)



## LAMBDA FITTINGS

Part Number	Material	Description
U690100	Mild	Lambda boss (M18 x 1.5)
U690100R	Stainless	Lambda boss (M18 x 1.5)
U690201	Mild	Lambda plug (with hex insert)
U690200*	Mild (chrome plated)	Lambda plug (with hex head)

U690100



U690100R



U690201



U690200

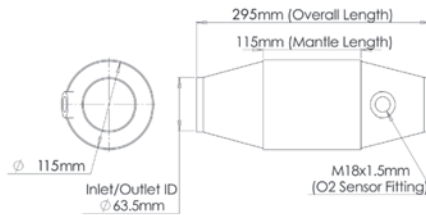


\* Design subject to change.

# 100 CPSI FIA APPROVED CATALYSTS (PETROL)

## 4" ROUND FIA RACE CAT 100CPSI

FITS PIPE DIAMETER...	101MM (4") OD BODY
63.5MM (2.5")	UK0263BR
76.2MM (3")	UK0276BR



100 CPSI  
METAL SUBSTRATE

- DMSB Approved.
- FIA Approved.
- Maximum operating temperature 1100 degrees celcius.
- Designed for petrol-engined production based sports cars, specialist production cars and kit cars.
- Mantle length 115mm. Overall length 295mm.

## 4" ROUND HIGH TEMPERATURE RACE CAT 100CPSI

1600°C

FITS PIPE DIAMETER...	101MM (4") OD BODY
63.5MM (2.5")	UK0263BRHT
76.2MM (3")	UK0276BRHT

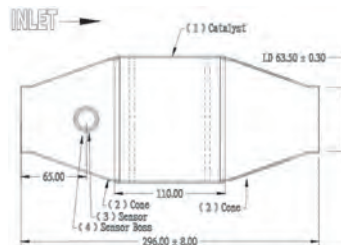


100 CPSI  
METAL SUBSTRATE

- DMSB Approved.
- FIA Approved.
- Maximum operating temperature 1600 degrees celcius.
- Designed for petrol-engined production based sports cars, specialist production cars and kit cars.
- Mantle length 115mm. Overall length 295mm.

## 5" ROUND FIA RACE CAT 100CPSI

FITS PIPE DIAMETER...	127MM (5") OD BODY
63.5MM (2.5")	UK0463BR
76.2MM (3")	UK0476BR



100 CPSI  
METAL SUBSTRATE

- DMSB Approved.
- FIA Approved.
- Maximum operating temperature 1100 degrees celcius.
- Designed for petrol-engined production based sports cars, specialist production cars and kit cars.
- Mantle length 115mm. Overall length 295mm.

## 5" ROUND HIGH TEMPERATURE RACE CAT 100CPSI

1600°C

FITS PIPE DIAMETER...	127MM (5") OD BODY
63.5MM (2.5")	UK0463BRHT
76.2MM (3")	UK0476BRHT



100 CPSI  
METAL SUBSTRATE

- DMSB Approved.
- FIA Approved.
- Maximum operating temperature 1100 degrees celcius.
- Designed for petrol-engined production based sports cars, specialist production cars and kit cars.
- Mantle length 115mm. Overall length 295mm.

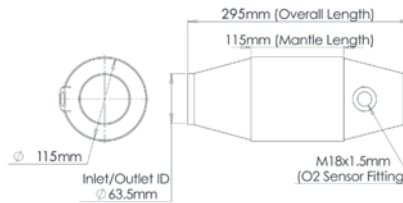


# 200 CPSI EU APPROVED CATALYST (PETROL)

## 4.5" ROUND E-MARKED CAT 200CPSI

FITS PIPE DIAMETER...	115MM (4.5") OD BODY
63.5MM (2.5")	UK0263CREU
76.2MM (3")	UK0276CREU
Approval Number	E9103R0021998

- Designed for performance road vehicles.
- Mantle length 115mm.
- Overall length 295mm.



# 200 CPSI EURO 5 CATALYST (PETROL)

## 4" ROUND EURO 5 CAT 200CPSI

EURO 5

FITS PIPE DIAMETER...	115MM (4.5") OD BODY
63.5MM (2.5")	UK0263CREURO5
76.2MM (3")	UK0276CREURO5

- Mantle length 115mm.
- Overall length 295mm.



# 200 CPSI X CATALYST (PETROL)

## OVAL CAT 200CPSI - TWIN IN/TWIN OUT

FITS PIPE DIAMETER...	180X400MM BODY
50.8MM (2")	UK907M51
57.2MM (2.25")	UK907M57
63.5MM (2.5")	UK907M64

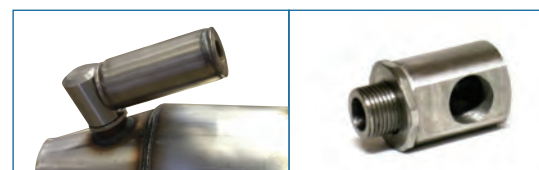
- Length 400mm.
- Width 180mm.



IDEAL FOR BMW AND MERCEDES APPLICATIONS

## A35/85/300

300CPSI micro O2 sensor converter.  
Suitable for any petrol engines.  
Removes MIL.



90 degree O2 adaptor. Allows micro sensor converter to align horizontally with original pipework (saves vertical space)

# 200 CPSI Y CATALYST (PETROL)

**OVAL** CAT 200CPSI - TWIN IN/SINGLE OUT

FITS PIPE DIAMETER...	180X400MM BODY
50.8MM (2")	UK908M51
57.2MM (2.25")	UK908M57
63.5MM (2.5")	UK908M64



200 CPSI  
METAL SUBSTRATE

- Length 400mm.  
- Width 180mm.

# 100 + 200 CPSI MANTLES (PETROL)



4" 108mm (OD) x 130mm (L)

A105/120/100 (100CPSI)  
A105/120/200 (200CPSI)



4.5" 121mm (OD) x 130mm (L)

A118/120/200 (200CPSI)



5" 130mm (OD) x 130mm (L)

A127/120/100 (100CPSI)  
A127/120/200 (200CPSI)

Ideal for making a custom catalyst where only the mantle is required.

# CONES FOR MANTLES



Fits 4" mantle - Tapers to 2.5"

Length 66mm

Part # GC10864R



Fits 4.5" mantle - Tapers to 2.5"

Length 84mm

Part# GC12164R



Fits 5" mantle - Tapers to 3"

Length 79mm

Part # GC13077R

# SLEEVES FOR CONES



For diameters smaller than 2", spacers are available down to 45mm (see page 13).



## TO BE WELDED TO MANTLE CONES

MANTLE FITMENT	FITS PIPE DIAMETER...	PART #
4" (A105/120/100 or 200)	2" (50.8mm)	RMC5169R
4" (A105/120/100 or 200) 4.5" (A118/120/200)	55mm	RMC5569R
4" (A105/120/100 or 200) 4.5" (A118/120/200)	2.25" (57mm)	RMC5769R
4" (A105/120/100 or 200) 4.5" (A118/120/200)	60mm	RMC6069R
4" (A105/120/100 or 200) 4.5" (A118/120/200) 5" (A127/120/100 or 200)	2.5" (63.5mm)	RMC6382R
5" (A127/120/100 or 200)	2.75" (70mm)	RMC7082R
5" (A127/120/100 or 200)	3" (76mm)	RMC7682R

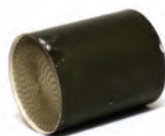
# COMPLETE CATALYSTS (PETROL) 100 + 200 CPSI

Catalyst Diameter	Substrate Length	Overall Diameter	Overall Length with cones and sleeves	Sleeve Diameter	BHP Rating (non-turbo)	BHP Rating (turbo)	Part Number	
							100 CPSI	200 CPSI
105mm/4"	120mm	108mm	398mm	50.8mm	170	255	SPORTS1A	SPORTS6A
105mm/4"	120mm	108mm	398mm	55mm	170	255	SPORTSID	SPORTS6D
105mm/4"	120mm	108mm	390mm	57mm	170	255	SPORTS1B	SPORTS6B
105mm/4"	120mm	108mm	382mm	60mm	170	255	SPORTS1F	SPORTS6F
105mm/4"	120mm	108mm	408mm	63.5mm	170	255	SPORTS1E	SPORTS6E
118mm/4.5"	120mm	121mm	434mm	55mm	215	325		SPORTS7C
118mm/4.5"	120mm	121mm	426mm	57mm	215	325		SPORTS7A
118mm/4.5"	120mm	121mm	418mm	60mm	215	325		SPORTS7D
118mm/4.5"	120mm	121mm	444mm	63.5mm	215	325		SPORTS7B
127mm/5"	120mm	130mm	434mm	63.5mm	250	375	SPORTS3A	SPORTS8A
127mm/5"	120mm	130mm	426mm	70mm	250	375	SPORTS3C	SPORTS8C
127mm/5"	120mm	130mm	410mm	76mm	250	375	SPORTS3B	SPORTS8B

Dimensions are approximate. Complete catalysts can be supplied without sleeves if required.  
A complete catalyst includes: 1 Mantle, 2 cones and 2 sleeves.  
These parts are made to order so please allow 3-5 days for delivery.

**100 CPSI**  
FOR RACE OR TRACK USE

**200 CPSI**  
FOR ROAD USE



Page 17



Page 17



Top of this page



Find a Jetex Stockist...



For your nearest stockist, call +44 (0)1789 298989  
or visit our website - [www.jetex.co.uk](http://www.jetex.co.uk)



See Jetex at...  
<http://facebook.com/jetexexhausts>

Your local Jetex Stockist:

